

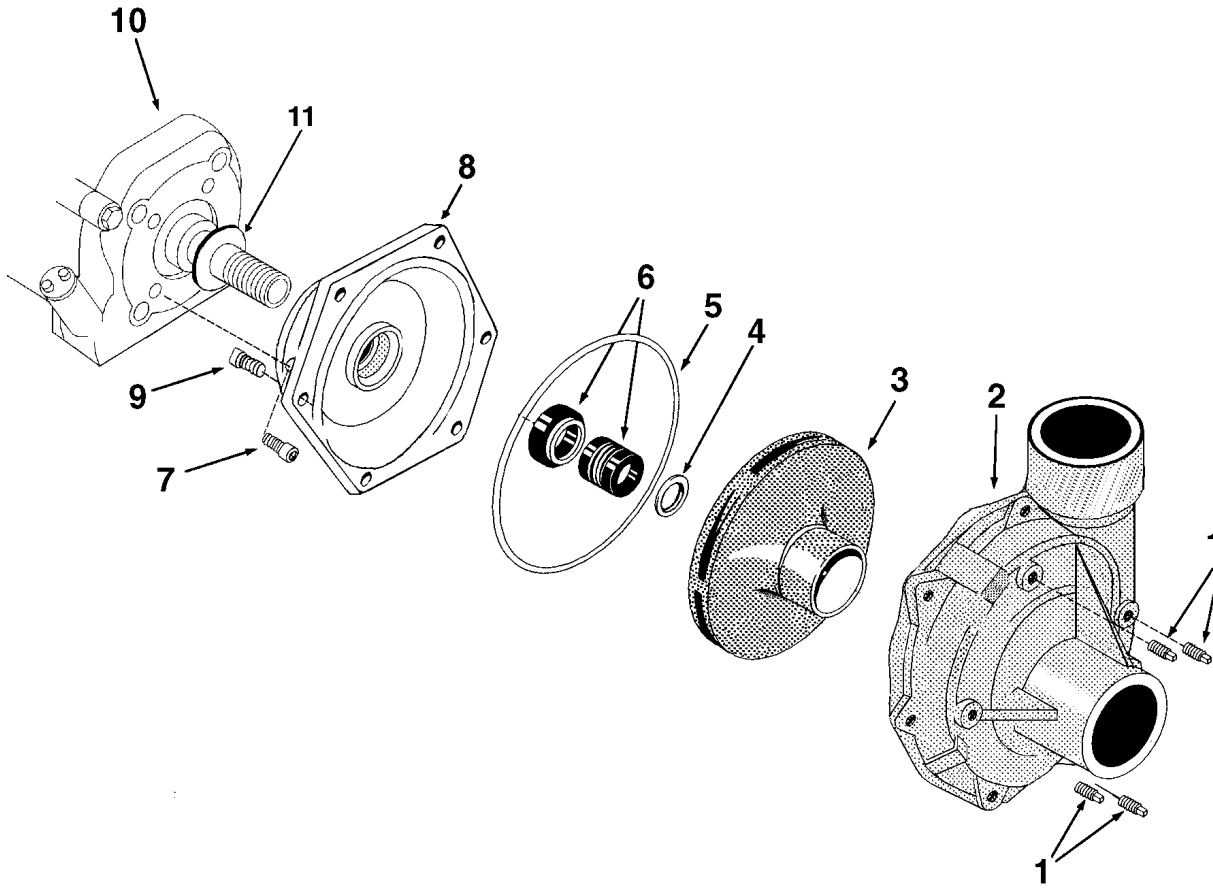
Seal, O-ring Repair Kit No. 3430-0332 consists of (1) Ref. 5 O-ring, (1) Ref. 6 Mechanical Seal (Viton) and (1) Ref. 4 Gasket.

NOTE: When ordering parts, give **quantity, part number, description, and complete model number.** Reference numbers are used **ONLY** to identify parts in the drawing and are **NOT** to be used as order numbers.

Ref. No.	Qty. Req'd.	Part No.	Description
1	4	2406-0007	Drain Plug
2	1	0152-9000C	Pump Casing (Includes a stainless steel wear ring.)
3	1	0402-9200P	Impeller (Nylon)
4	1	1700-0100	Gasket
5	1	1720-0083	O-ring
6	1	2120-0009	Mechanical Seal-Viton
7	4	2210-0098	Bolt
8	4	1700-0119	Seal
9	1	0703-9200C	Flange
10	4	2210-0020	Bolt

Ref. No.	Qty. Req'd.	Part No.	Description
11	4	2210-0021	Bolt
12	4	2270-0040	Washer
13	1	1510-0083	Mounting Plate
14	4	2260-0002	Lock Washer
15	4	2250-0003	Nut
16	1	2541-0033 (135232-0035-01)*	Briggs & Stratton Engine (Models 1536 and 1539)
16	1	2541-0034 (GX160K1TYPE-TX2)*	Honda Engine (Model 1537)
16	1	2541-0035 (GX160KIT1C3)	Honda Engine (Model 1540)
17	1	1410-0087	Spacer
18	1	1410-0088	Bearing Shield
19	1	6031-0252	Nameplate (not shown)

*Contact the engine manufacturer for this product number.



Ref. No.	Qty. Req'd.	Part No.	Description
1	4	2406-0007	Drain Plug
2	1	0153-9200C	Pump Casing (Includes a stainless steel wear ring.)
3	1	0404-9200P	Impeller (Nylon)
4	1	1700-0121	Gasket
5	1	1720-0180	O-ring
6	1	2120-0034	Mechanical Seal-Viton
7	4	2210-0098	Bolt
8	1	0707-9200C	Flange
9	6	2210-0086	Bolt
10	1	2541-0037 (GX-270PA)*	Honda Engine (Model 1550)
11	1	1410-0091	Slinger Ring

**Seal, O-ring Repair Kit
No. 3430-0464**

consists of (1) Ref. 5 O-ring, (1) Ref. 6 Mechanical Seal (Viton) and (1) Ref. 4 Gasket.

NOTE: When ordering parts, give **quantity, part number, description, and complete model number.** Reference numbers are used **ONLY** to identify parts in the drawing and are **NOT** to be used as order numbers.

*Contact the engine manufacturer for this product number.