

Models 9910-D50, D50AP-A, & D50-B

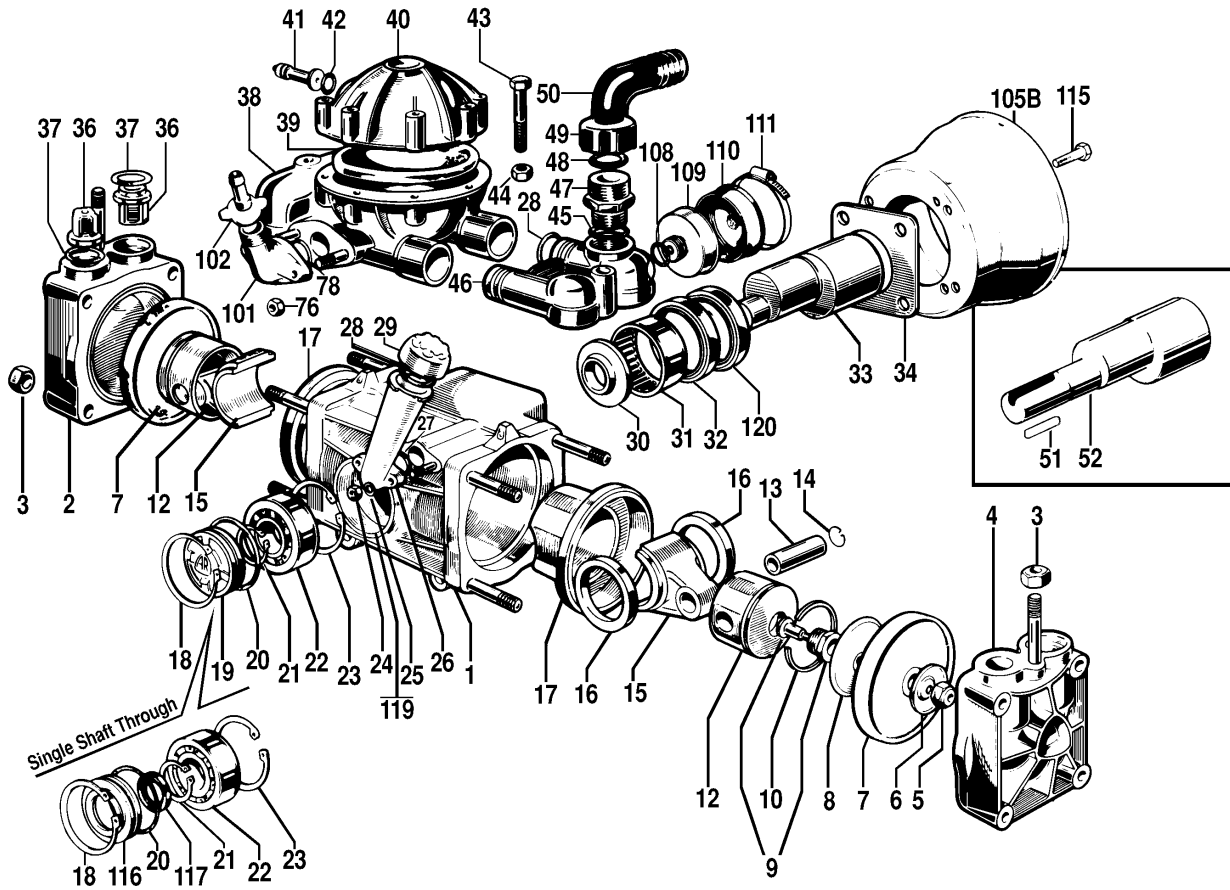


Figure 30

Ref. No.	Part Number	Description	Qty.
1	9910-650010	Pump Body	1
2	9910-650102	Left Head Assembly	1
3	9910-320130	Nut	10
4	9910-650101	Right Head Assembly	1
5	9910-160311	Lock Nut	2
6	9910-650390	Retaining Washer	2
7 ³	9910-650085	Diaphragm (Desmopan) (Std.)	2
7 ²	9910-650082	Diaphragm (Buna-N) (Opt.)	2
7	9910-65008T	Diaphragm (Teflon) (Opt.)	2
8	9910-650090	Diaphragm Support Washer	2
9	9910-659080	Lock Nut & Retaining Nut Assy.	2
10	9910-650190	Piston Ring	2
12	9910-650121	Piston	2
13	9910-650071	Connecting Rod Pin	2
14	9910-160691	Retainer Ring	4
15	9910-650142	Connecting Rod	2
16	9910-650130	Retainer Ring	2
17	9910-650111	Piston Sleeve	2
18	9910-200390	Retainer Ring	1
19	9910-650046	Oil Seal Cap	1
20	9910-650920	Gasket Ring	1
21	9919-650480	Retainer Ring	1
22	9910-230330	Ball Bearing	1
23	9910-161050	Retainer Ring	1
24	9910-390440	Nut	2
25	9910-550331	Washer	2
26	9910-650030	Oil Sight Glass	1
27 ¹	9910-180101	O-Ring	1
28 ¹	9910-550040	O-Ring	5
29	9910-550056	Cap for Sight Glass	1
30	9910-650160	Spacer Washer	1
31	9910-650200	Roller Bearings	1
32	9910-1400150	Seal	1
33	9910-650170	Crankshaft	1
34	9910-1400140	Flange Cover	1
36 ⁴	9910-659050	Check Valve Assembly	4
37 ^{1,2,3,4}	9910-320030	O-Ring	4

Ref. No.	Part Number	Description	Qty.
37	9910-1880130	O-Ring	1
38	9910-659204	Accumulator Manifold	1
39 ^{2,3}	9910-650520	Accumulator Diaphragm	1
39	9910-65052T	Accumulator Dia., (Teflon) (Opt.)	1
40	9910-650230	Accumulator Head	1
41	9910-180020	Air Valve	1
42 ¹	9910-650542	O-Ring	1
43	9910-380250	M8 X 45 Bolt	10
44	9910-390270	Nut	10
45 ¹	9910-390290	O-Ring	1
46	9910-650150	Manifold	1
47	9910-450120	Threaded Adapter	1
48 ¹	9910-390290	O-Ring	1
49	9910-580060	Barb Nut	1
50	9910-580040	1-1/4" Hose Barb	1
51	9910-650250	Key	1
52	9910-650171	Crankshaft 1" Thru-Shaft (AP-A)	1
72	9910-500171	Lock Retaining Washer	1
76	9910-390270	Nut	2
78 ¹	9910-550350	O-Ring	1
101	9910-450145	Discharge Flange Housing	1
101	9910-450146	Dis. Fig. Hsg. (1/2" NPT, Straight)	1
102	9910-110130	Hose Barb & Nut	1
105A	2840-0028	Steel Safety Shield	1
105B	9910-1500350	Durable Plastic Shield (Opt.)	1
106	2270-0004	Washer	2
108 ¹	9910-180101	O-Ring	1
109	9910-650660	Dampener Body	1
110	9910-650670	Dampener Diaphragm	1
111	9910-650690	Clamp	1
115	9910-650290	Bolt	4
116	9910-650041	Spacer (AP-A Model)	1
117	9910-650490	Seal (AP-A Model)	1
118	9910-0022	Name Plate (Not Shown)	1
119	9910-130171	Drain Plug	1
120	9910-1400110	Flange	1

¹ Denotes O-Ring Kit 9910-KIT1919

² Denotes Diaphragm Kit (Buna-N) 9910-KIT2111

³ Denotes Diaphragm Kit (Desmopan) 9910-KIT1725

⁴ Denotes Valve Kit 9910-KIT1920

Ref. No.	Description	Tightening Torque	
		In. Lbs.	Nm
1	Diaphragm Pin	87.5	9.8
13	Bolt	87.5	9.8
23	Bolt	87.5	9.8
25	Bolt	87.5	9.8
37	Bolt	87.5	9.8
41	Bolt	175.0	19.6
48	Bolt	175.0	19.6
54	Bolt	175.0	19.6
58	Plug	175.0	19.6

O-Ring Kit 9910-KIT1919	
Ref No.	Qty.
27	1
28	5
37	4
42	1
45	1
48	1
78	1
108	1

Diaphragm Kit (Buna-N) 9910-KIT2111	
Ref No.	Qty.
7	2
37	4
39	1

Diaphragm Kit (Desmopan) 9910-KIT1725	
Ref No.	Qty.
7	2
37	4
39	1

Valve Kit 9910-KIT1920	
Ref No.	Qty.
36	4
37	4